

5E3155

B. Tech. (Sem. V) (Main/Back) Examination, December - 2013
Civil Engg.
5CE5 Quantity Surveying & Valuation

Time : 3 Hours]

[Total Marks : 80

[Min. Passing Marks : 24

*Attempt any five questions. Selecting one question from each unit.
All questions carry equal marks. Schematic diagrams must be
shown wherever necessary. Any data you feel missing suitably
be assumed and stated clearly. Units of quantities used /
calculated must be stated clearly.*

Use of following supporting material is permitted during examination.
(Mentioned in form No. 205)

1. _____ **NIL** _____ 2. _____ **NIL** _____

UNIT - I

1 Differentiate the following :

- (a) Book value and Assessed value.
- (b) Distress value and Salvage value
- (c) Land acquisition and Obsolescence
- (d) Free hold and Lease hold properties.

4×4=16

OR

- 1 (i) Earnest money and Performance security.
(ii) Security deposit and Bank Guarantor
(iii) Remunerative and Non-remunerative work
(iv) S.I.T.C. and B.O.T. work.

4×4=16

UNIT - II

2 (a) Explain the term "Deposit Work".

7

- (b) What is the function of Administrative Approval, Expenditure sanction and Technical sanction in a project.

9

OR

- 2 (a) Enlist the different methods of Valuation. Explain in detail Land and building method. 7
- (b) Describe the term "Appropriation, Reappropriations and Completion certificate. 9

UNIT - III

- 3 (a) What are the factors to be considered for the preparation of Detailed estimate. 4
- (b) Explain the term :
 (i) Tool and Plant provision
 (ii) Departmental charges
 (iii) Floor Area. 6
- (c) Explain the role of a Valuer in a society. rtuonline.com 6

OR

- 3 (a) Write down the Rate analysis for R.C.C. (1:2:4) in beams, slabs with 20 mm nominal size aggregate (excluding centering and shuttering). Assume suitable data. 10
- (b) Describe "Bar Bending Schedule". 6

UNIT - IV

- 4 (a) Prepare a rough cast estimate for the civil works required for a school requiring a total carpet area of 5000 sq. m. This includes the actual floor area required for class rooms, labs, offices and store etc. Suitable extra provision should be made for walls, verandahs, corridors, lavatories, stair case etc. The plinth area rates is Rs. 1500 per sq. m. for that area. Suitable extra provision may be made for special architectural features, water supply and sanitary connections, for internal power and electrical connections and for other services. 12



- (b) Enlist the different percentage for different services in a house.

4

OR

- 4 (i) What is 'C.S.R.' ? What information does it gives ?

6

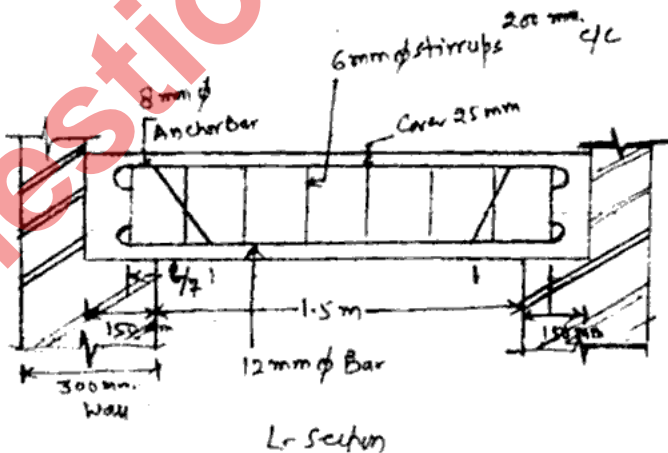
- (ii) Write down the unit of measurement of the following :

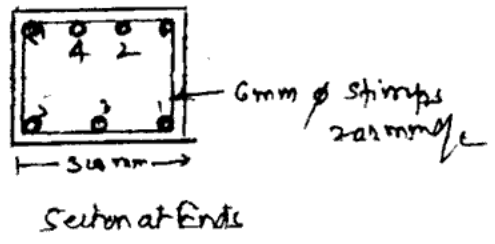
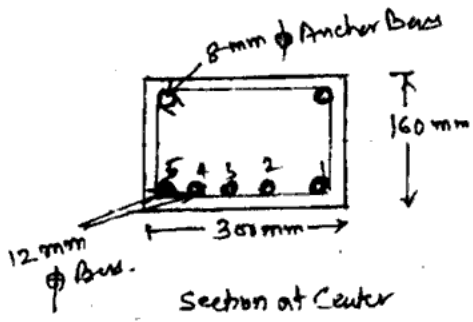
- (i) Hold fast
- (ii) Gusset plate
- (iii) Tar felting
- (iv) Barbed wire fencing
- (v) Bolt and Nut
- (vi) Railing (height and type specified)
- (vii) Bending, Binding and Placing of reinforcement
- (viii) Roof with C.G.I. sheet
- (ix) 40 mm thick D.P.T.
- (x) Jungle clearance.

10

UNIT - V

- 5 Find the quantities of steel in a lintel over an opening from the given drawings shown in Fig (Also draw schedule of bars)

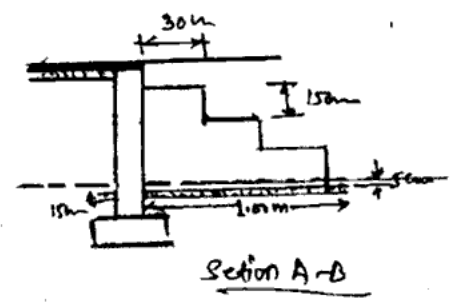
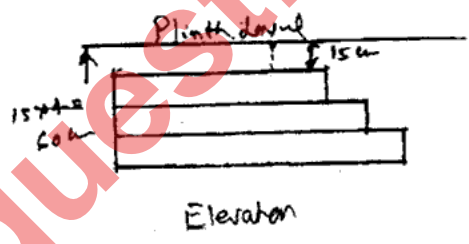
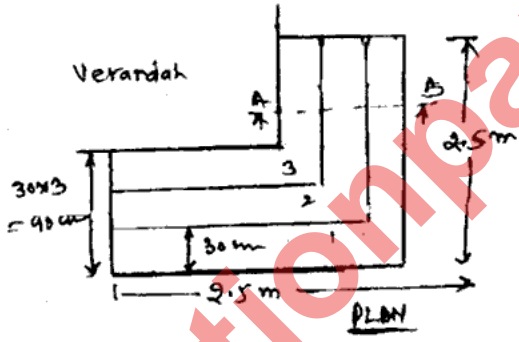




16

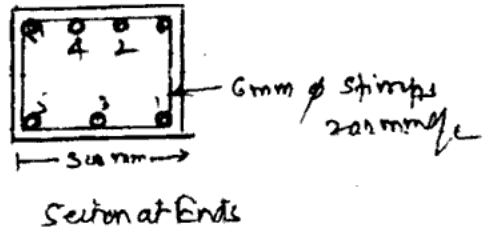
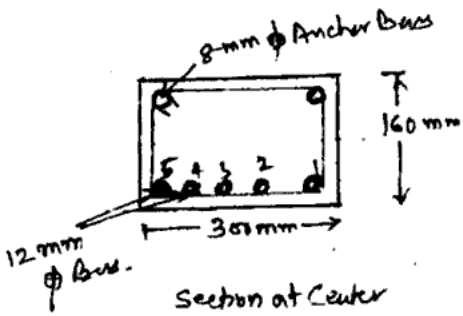
OR

- 5 Estimate the following items with the help of Fig. given below. Assume other data, if required.
- (i) Earth work in excavation
 - (ii) Concrete in foundation
 - (iii) Brick work
 - (iv) 20 mm cement plinth



16

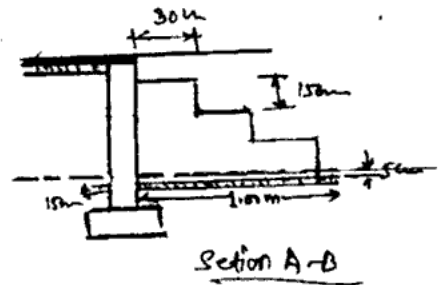
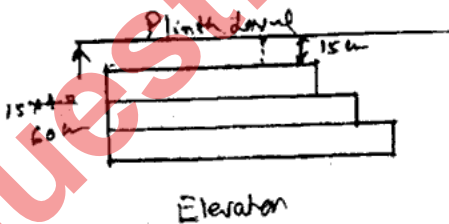
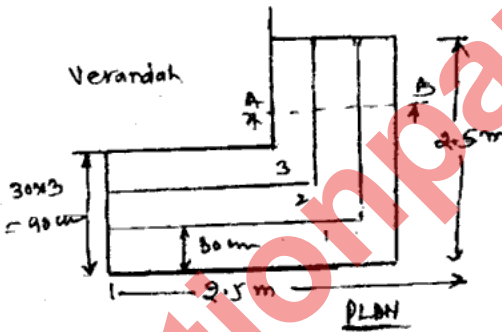




16

OR

- 5 Estimate the following items with the help of Fig. given below. Assume other data, if required.
- Earth work in excavation
 - Concrete in foundation
 - Brick work
 - 20 mm cement plinth



16

